

Guide for setup of PC as user module for TSC screen

(usable for access to TSC screen on rooms from central office etc.)

The different user panels are directly connected to the customer network.

Each panel needs a free IP address.

IP address and **code for licenses for the GP-Viewer** is inserted in the panel.

Follow the guide [<https://www.lillnord.dk/wp-content/uploads/2022/06/Guide-to-surveillance-setup.pdf>].

GP-Viewer EX is installed on the PC, destined to remotely control the panels.

The program is delivered from LILLNORD on a USB stick.

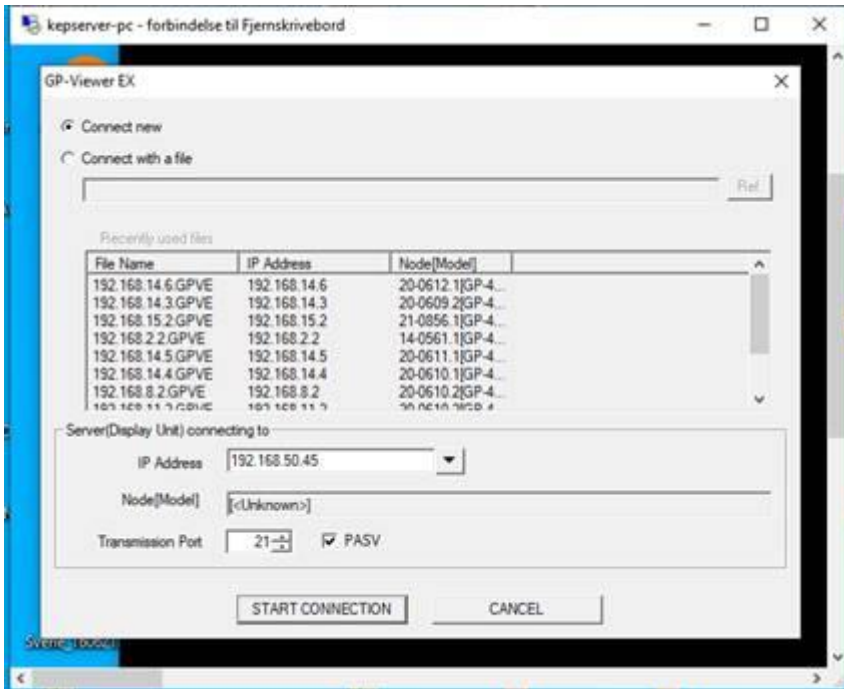
Start the program "Proex_Setup.EXE"

In the setup menu you see this:



Click on **GP-Viewer EX**, after which the program is installed on the PC

Type in the IP address on the panel, you need it to be connected to



Start the connection by pressing "START CONNECTION "



It is possible to connect to more than one panel at the same time.