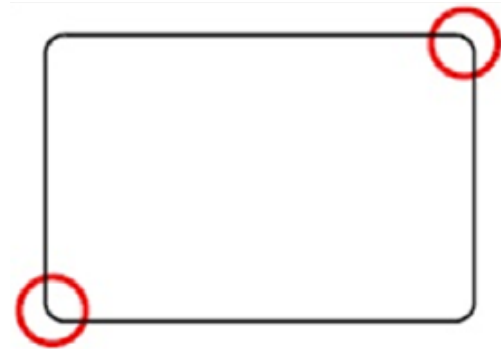


Setup for surveillance in Touch

Touch the upper right corner and then the lower left corner within 0,5 seconds to go offline.

Notice: Touch the screen as marginal as possible to go online. You may have to try several times.



Programming of IP addresses

Press på Offline/MainUnit/Ethernet

Local Name:

Fill out with the serial number of the unit, to be found on the type plate.

AA-BBBB.X

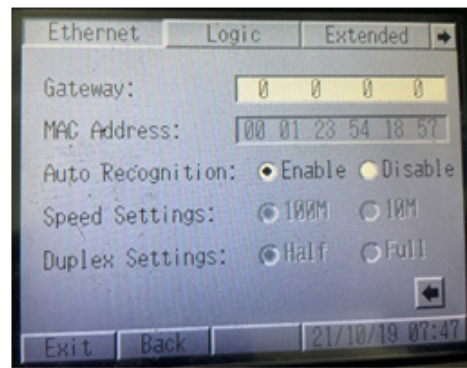
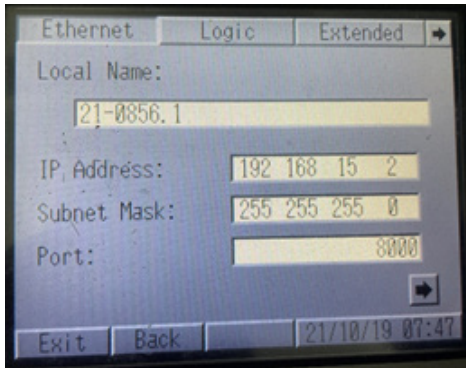
AA = Year (important with dash after year)

BBBB = Running number (important with full stop after this)

X= Room number by combi rooms or multiorders

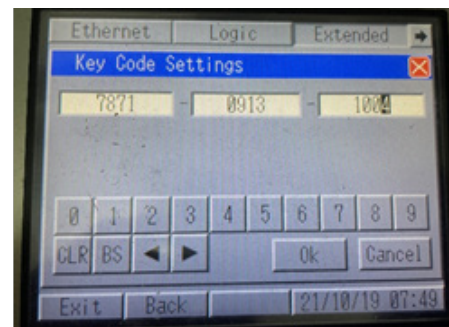
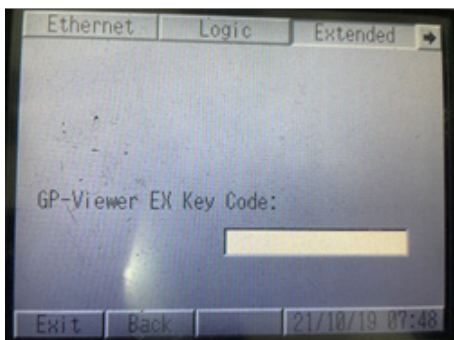
Example 21-0856.1

Y = -----	“Delivered by LILLNORD”
X = Unit no. +1	For unit 1 x is = 2
Touch IP Address	192.168.Y.X
Room 21-0856.1	192.168.Y.2
Room 21-0856.2	192.168.Y.3
Room 21-0856.3	192.168.Y.4
Subnet Mask	255.255.255.0
Port	8000
Gateway	0.0.0.0



Programming of license

Go back to Main Unit and choose Extended.
Insert licens code "Coming from LILLNORD"

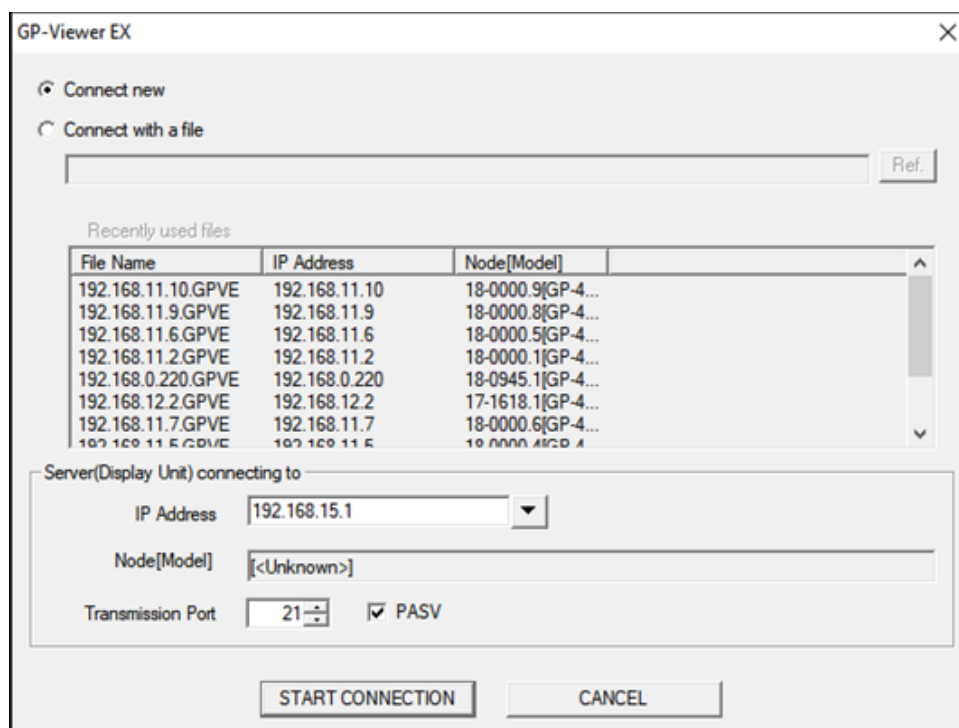


Installation of GP-Viewer

You find the program on a USB stick.

Name	Date modified	Type	Size
CMRVIEWEX	14-12-2021 08:58	File folder	
DATACOPY	14-12-2021 08:58	File folder	
FIELDBUS	14-12-2021 08:58	File folder	
FINGERPRINT	14-12-2021 08:58	File folder	
GPVIEWEX	14-12-2021 08:58	File folder	
INSTALLDATA	14-12-2021 08:58	File folder	
MTOMLAN	14-12-2021 08:58	File folder	
OPTION	14-12-2021 08:58	File folder	
PASSTHROUGH	14-12-2021 08:58	File folder	
REMOTEHMISERVER	14-12-2021 08:58	File folder	
RMPRINTSRV	14-12-2021 08:58	File folder	
RPA	14-12-2021 08:58	File folder	
WINGP	14-12-2021 08:58	File folder	
ABS.SYS	18-09-2007 06:13	System file	0 KB
GP-PROEX	17-05-2011 03:46	Icon	22 KB
PROEX_SETUP	06-08-2020 04:29	Application	294 KB
PROFACE	30-09-2021 05:10	Configuration sett...	1 KB

First you install the ProEX_Setup file. Then you install the GP-Viewer.



Type in the chosen IP-address and click Start Connection.