



LILLNORD

next generation cooling technologies

RESERVEDELSKATALOG
Ældre dele

SPARE PARTS CATALOGUE
Old parts

ERSATZTEILKATALOG
Alte Teile

Indhold / Contents / Inhalt

RUM / ROOM / RAUM

Blæser / Fan / Gebläse	3
Varme / Heating / Heizung	4
Døre / Doors / Türen:	
Hængsler / Hinges / Scharniere	5
Lukketøj / Fasteners / Befestigungen	6
Pakninger / Seals / Dichtungen	12
Lys / Light / Licht	13

DAMP / STEAM / DAMPF

Beholder / Container / Behälter	14
Ventiler / Valves / Ventilen	16
Tilbehør / Accessories / Zubehör	17

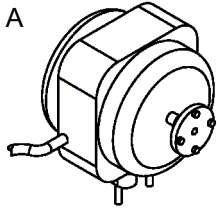
EI / POWER / STROM

Computer / Computer / Computer	18
Følere / Sensors / Sensoren	21
Relæer / Relays / Relais	22

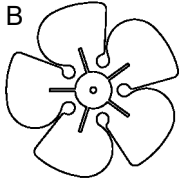
Tegning Drawing Skizze	X	Varenummer Code number Bestellnummer	DK Beskrivelse	GB Description	D Beschreibung
------------------------------	---	--	--------------------------	--------------------------	--------------------------

Tegning Drawing Skizze	X	Varenummer Code number Bestellnummer	DK Udgået	GB Discontinued	D Eingestellt
------------------------------	---	---	---------------------	---------------------------	-------------------------

RUM / ROOM / RAUM
Blæser / Fan / Gebläse

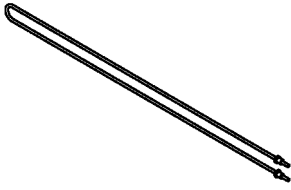


		DK	GB	D
A	015 241	Blæsemotor, speciel for brødsyre.	Fan motor, special for bread acid.	Gebläsmotor, speziell für Brotsäure.
B	015 212	Vinge	Fan blade	Gebläseflügel



FR	KR	R	K	DC	DO	Mini	ML	PG	SF
X	X	X	X					X	

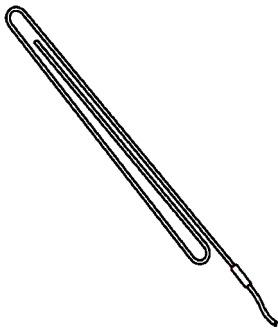
RUM / ROOM / RAUM
 Varme / Heating / Heizung



	DK	GB	D
064 651	Varmelegeme, 1300 W 2100mm	Heating element, 1300 W 2100mm	Heizkörper, 1300 W 2100mm
OBS: Note: Beachten:	Kan tilpasses efter det eksisterende varmelegeme med bløde buk	To be fitted to existing heating element by way of mild bends	Zum Anpassen an bestehendes Heizkörper durch weiche Biegung

FR	KR	R	K	DC	DO	Mini	ML	PG	SF
X	X	X			X				

Før / Before / Bevor 2003



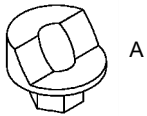
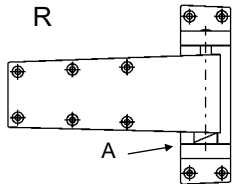
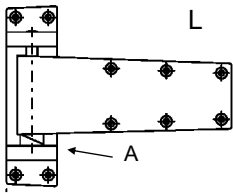
	DK	GB	D
1501 1076	Varmestav til elafrimning	Element for electrical defrosting of evaporator.	Heizung für elektrischer abtau des Verdampfers

FR	KR	R	K	DC	DO	Mini	ML	PG	SF
				X					

Før / Before / Bevor 2002

RUM / ROOM / RAUM

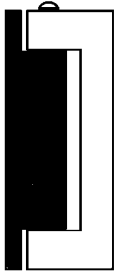
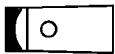
Hængsler / Hinges / Scharniere



		DK	GB	D
L	012 533	Hængsel, krom til 90 + 130 mm døre	Hinge, chrome for 90 + 130 mm doors	Scharnier, Chrom für 90 + 130 mm Türen
R	012 534	Hængsel, krom til 90 + 130 mm døre	Hinge, chrome for 90 + 130 mm doors	Scharnier, Chrom für 90 + 130 mm Türen
A	012 517	Hæveringe L/R, 2 stk. pr hængsel	Lift/lower function L/R, 2 pc. per hinge	Scharnier Buchsen L/R, 2 Stck per. Scharnier

FR	KR	R	K	DC	DO	Mini	ML	PG	SF
X	X	(X)	(X)	X	X		X		X

Før / Before / Bevor 2003



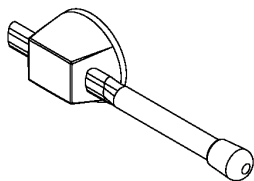
		DK	GB	D
	012 521	Hængsel, sort/forkromet til 60 mm døre	Hinge, black/chrome for 60 mm doors	Scharnier, schwarz/Chrom für 60 mm Türen

FR	KR	R	K	DC	DO	Mini	ML	PG	SF
X	X	X	X						

Før / Before / Bevor 1993

RUM / ROOM / RAUM

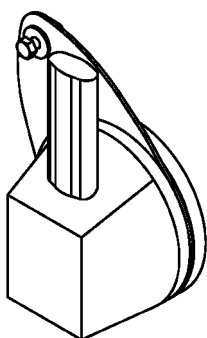
Lukketøj / Fasteners / Befestigungen



	DK	GB	D
012 629	Håndtag, indvendig 2 pkt 90mm, til 012668	Handle, inside 1point 90mm, for 012668	Griff, innen 1Punkt 90mm, für 012668
1208 9460	Udskiftningskit 2 pkt.	Replacement kit 2 point	Ersatz-Kit 2 Punkt

FR	KR	R	K	DC	DO	Mini	ML	PG	SF
X	X	(X)			X				

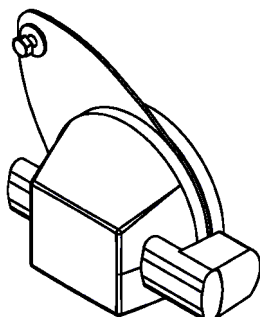
Efter / After / Nach 2007



	DK	GB	D
012 633	Lukker, TOP 90mm, 2 pkt.	Internal shutter, TOP 90mm, 2 point	Verschluss, OBEN 90mm, 2 Punkt
1208 9460	Udskiftningskit 2 pkt.	Replacement kit 2 point	Ersatz-Kit 2 Punkt
000 0257	Manual, Udskiftningskit	Manual, Replacement kit	Manual, Ersatz-Kit

FR	KR	R	K	DC	DO	Mini	ML	PG	SF
X	X	(X)							

Efter / After / Nach 2007



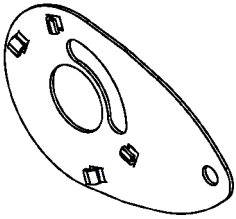
	DK	GB	D
012 634	Lukker, BUND 90mm, 2 pkt	Internal shutter, BOTTOM 90mm, 2 point	Verschluss, UNTEN 90mm, 2 Punkt
1208 9460	Udskiftningskit 2 pkt.	Replacement kit 2 point	Ersatz-Kit 2 Punkt

FR	KR	R	K	DC	DO	Mini	ML	PG	SF
X	X	(X)							

Efter / After / Nach 2007

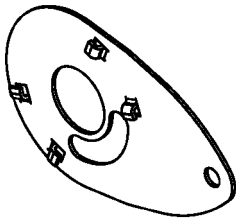
RUM / ROOM / RAUM

Lukketøj / Fasteners / Befestigungen



	DK	GB	D
012 625	Arm for trækstang, TOP	Lever for draw rod TOP	Hebel für Ziehstange OBEN
1208 9460	Udskiftningskit 2 pkt.	Replacement kit 2 point	Ersatz-Kit 2 Punkt

FR	KR	R	K	DC	DO	Mini	ML	PG	SF
X	X	(X)							

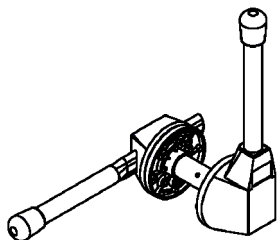


	DK	GB	D
012 626	Arm for trækstang BUND / MIDTE	Lever for draw rod BOTTOM / MIDDLE	Hebel für Ziehstange UNTEN / MITTE
1208 9460	Udskiftningskit 2 pkt.	Replacement kit 2 point	Ersatz-Kit 2 Punkt

FR	KR	R	K	DC	DO	Mini	ML	PG	SF
X	X	(X)							

RUM / ROOM / RAUM

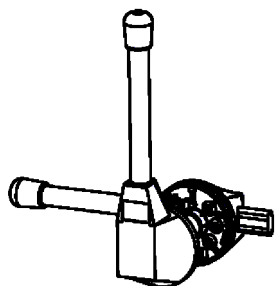
Lukketøj / Fasteners / Befestigungen



	DK	GB	D
012 647	Håndtag 90mm, 1 pkt. Enkelt dør	Handle 90mm, 1 point Single door	Griff 90mm, 1 Punkt, Einzel Tür

FR	KR	R	K	DC	DO	Mini	ML	PG	SF
X	X	(X)		X	X				

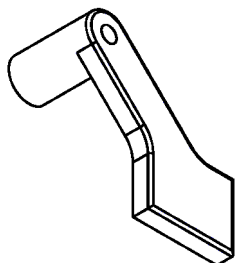
Før / Before / Bevor 2007



	DK	GB	D
012 648	Håndtag 90mm, 2 pkt. Dobbelt dør	Handle 90mm, 2 point Double door	Griff 90mm, 2 Punkt Doppelt Tür
1208 9460	Udskiftningskit 2 pkt.	Replacement kit 2 point	Ersatz-Kit 2 Punkt

FR	KR	R	K	DC	DO	Mini	ML	PG	SF
X	X	X							

Før / Before / Bevor 2007

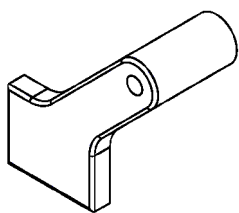


	DK	GB	D
012 632	Arm for trækstang, BUND / MIDT	Lever for pull rod, BOTTOM / MIDDLE	Hebel für Ziehstange. UNTEN / MITTE
1208 9460	Udskiftningskit 2 pkt. komplet	Replacement kit 2 point complete	Ersatz-Kit 2 Punkt Komplet
1208 9461	Udskiftningskit, kun midt	Replacement kit, only middle	Ersatz-Kit, nur Mitte

FR	KR	R	K	DC	DO	Mini	ML	PG	SF
X	X	(X)							

RUM / ROOM / RAUM

Lukketøj / Fasteners / Befestigungen



	DK	GB	D
012 631	Arm for trækstang TOP	Lever for pull rod, TOP	Hebel für Ziehstange, OBEN
1208 9460	Udskiftningskit 2 pkt.	Replacement kit 2 point	Ersatz-Kit 2 Punkt

FR	KR	R	K	DC	DO	Mini	ML	PG	SF
X	X	(X)							

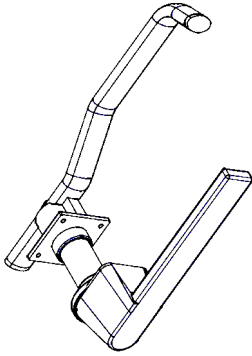
Udgået, brug / No longer stocked, use / Entfallen, verwenden **1208 9462**



	DK	GB	D
1211 9410	Trækstang, dobbelt dør 1990 mm	Draw rod, double door 1990 mm	Ziehstange, Doppeltür 1990 mm
012 643	Møtrik til trækstang	Nut for draw rod	Nuss für Ziehstange
012 623	Montagekit indiv. håndtag	Mounting kit internal handle	Montage-Kit innen Griff

FR	KR	R	K	DC	DO	Mini	ML	PG	SF
X	X	(X)							

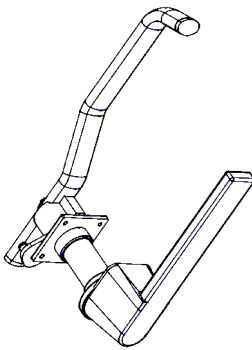
RUM / ROOM / RAUM
Lukketøj / Fasteners / Befestigungen



	DK	GB	D
012 536	Håndtag 90mm, 1 pkt. uden lås, grå	Handle 90mm, 1 point without lock, grey	Griff 90mm, 1 Punkt ohne Schloss, grau
	<i>Håndtaget er udgået.</i>	<i>Handle been discontinued</i>	<i>Griff wurde eingestellt</i>
1208 9464	Udskiftningskit 1 pkt.	Replacement kit 1 point	Ersatz-Kit 1 Punkt
000 0256	Manual, Udskiftningskit	Manual, Replacement kit	Manual, Ersatz-Kit

FR	KR	R	K	DC	DO	Mi Li	ML	PG	SF
X									

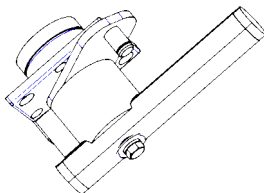
Før / Before / Bevor 2004



	DK	GB	D
012 538	Håndtag 90mm, 3 pkt. uden lås, grå	Handle 90mm, 3 point without lock, grey	Griff 90mm, 3 Punkt ohne Schloss, grau
	<i>Håndtaget er udgået.</i>	<i>Handle been discontinued</i>	<i>Griff wurde eingestellt</i>
1208 9462	Udskiftningskit 3 pkt.	Replacement kit 3 point	Ersatz-Kit 3 Punkt
000 0258	Manual, Udskiftningskit	Manual, Replacement kit	Manual, Ersatz-Kit

FR	KR	R	K	DC	DO	Mi Li	ML	PG	SF
X									

Før / Before / Bevor 2004



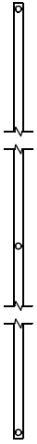
	DK	GB	D
012 537	Lukkebeslag 3 pkt. top / bund	Internal shutter, 3 points top / bottom	Verschluss, 3 Punkt Oben / Unten
	<i>Lukkebeslag er udgået</i>	<i>Shutter been discontinued</i>	<i>Verschluss wurde eingestellt</i>
1208 9462	Udskiftningskit 3 pkt.	Replacement kit 3 point	Ersatz-Kit 3 Punkt

FR	KR	R	K	DC	DO	Mi Li	ML	PG	SF
X									

Før / Before / Bevor 2004

RUM / ROOM / RAUM

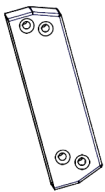
Lukketøj / Fasteners / Befestigelungen



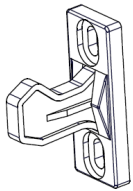
	DK	GB	D
1311 5047	Trækstang, dobbelt dør 1990 mm	Draw rod, double door 1990 mm	Ziehstange, Doppeltür 1990 mm

FR	KR	R	K	DC	DO	Mi Li	ML	PG	SF
X									

Før / Before / Bevor 2004

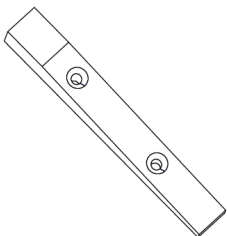


	DK	GB	D
012 615	Fjederholder TL dør	Spring holder TL door	Federhalter TL Tür



	DK	GB	D
012 616	Hage til fjederholder	Hage for spring holderr	Haken für Federhalter

FR	KR	R	K	DC	DO	Mi Li	ML	PG	SF
X	X	X	X						



	DK	GB	D
4105 1152	Kile for dobbeltdør	Wedge for double door	Keil für Doppeltür

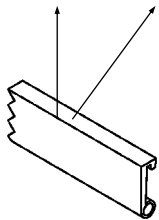
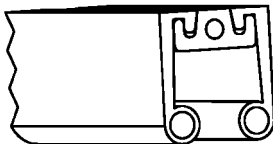
FR	KR	R	K	DC	DO	Mini	ML	PG	SF
X									

RUM / ROOM / RAUM
Pakninger / Seals / Dichtungen



	DK	GB	D
012 505	Dørpakning Fryserasker KS gl. type	Door packing Frezer Prover old type	Türdichtung Gärunterbre- cher, alter type

FR	KR	R	K	DC	DO	Mi Li	ML	PG	SF
X				X					

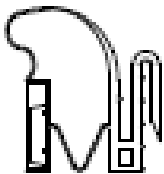


2 stk. /pcs /Stck

	DK	GB	DE
012 558	Dørpakning til skydedør, højde 20mm	Door seal for sliding door, height 20mm	Türdichtung für Schiebetür, Höhe 20mm

L = Dør / Door / Tür (Hx2 + B) x 2

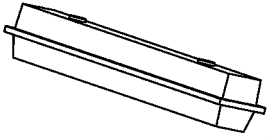
FR	KR	R	FB	K	DC	DO	ML	SF
X	X	X	X	X	X	X		X



	DK	GB	D
012 735	Magnet dørpakning komplet 5 m	Magnet door gasket complete 5 m	Magnet Türdichtung komplett 5 m

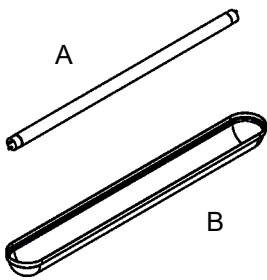
FR	KR	R	K	DC	DO	Mi Li	ML	PG	SF
X		X	X						

RUM / ROOM / RAUM
Lys / Light / Licht



	DK	GB	D
064 874	Armatør IP65 1x18 Watt	Light fitting IP65 1x18 Watt	Leuchte IP65 1x18 Watt
064 875	Armatør IP65 1x36 Watt	Light fitting IP65 1x36 Watt	Leuchte IP65 1x36 Watt

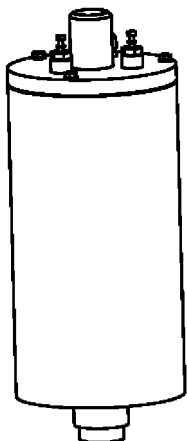
FR	KR	R	K	DC	DO	Mini	ML	PG	SF
X	X	X		X	X				



	DK	GB	D
A 064 862	Lysstofrør 18W/33	Flourescent tube 18W/33	Leuchtstoffröhre 18W/33
A 064 864	Lysstofrør 36W/83	Flourescent tube 18W/83	Leuchtstoffröhre 36W/83
B 064 879	Armatørskærm for IP65 1x18 Watt	Light bracket for IP65 1x18 Watt	Leuchtenschild für IP65 1x18 Watt
B 064 878	Armatørskærm for IP65 1x36 Watt	Light bracket for IP65 1x36 Watt	Leuchtenschild für IP65 1x36 Watt

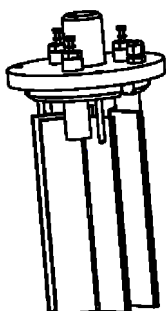
FR	KR	R	K	DC	DO	Mini	ML	PG	SF
X	X	X		X	X				

DAMP / STEAM / DAMPF
Beholder / Container / Behälter

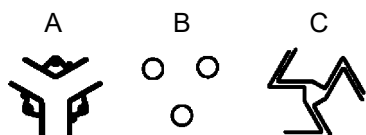


	DK	GB	D
4005 1064	Beholder K E200/30 A40	Container K E200/30 A40	Behälter K E200/30 A40
4005 1065	Beholder K E200/20 A40	Container K E200/20 A40	Behälter K E200/20 A40
4005 1066	Beholder K E200/10 A40	Container K E200/10 A40	Behälter K E200/10 A40
4005 1067	Beholder K E200/5 A40	Container K E200/5 A40	Behälter K E200/5 A40
4005 1068	Beholder K E200/R A40	Container K E200/R A40	Behälter K E200/R A40
4005 1099	Beholder K E200/Z A40	Container K E200/Z A40	Behälter K E200/Z A40

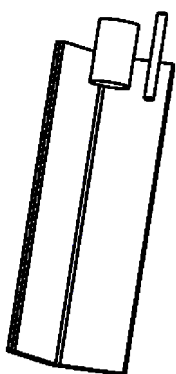
FR	KR	R	K	DC	DO	Mini	ML	PG	SF
X	X	X						X	



	DK	GB	D
A 4005 1059	Elektrode top E200/30 A40	Electrode top E200/30 A40	Elektrode top E200/30 A40
A 4005 1058	Elektrode top E200/20 A40	Electrode top E200/20 A40	Elektrode top E200/20 A40
A 4005 1057	Elektrode top E200/10 A40	Electrode top E200/10 A40	Elektrode top E200/10 A40
A 4005 1061	Elektrode top E200/5 A40	Electrode top E200/5 A40	Elektrode top E200/5 A40
B 4005 1056	Elektrode top E200/R A40	Electrode top E200/R A40	Elektrode top E200/R A40
C 4005 1098	Elektrode top E210/Z A40	Electrode top E210/Z A40	Elektrode top E210/Z A40



FR	KR	R	K	DC	DO	Mini	ML	PG	SF
X	X	X						X	

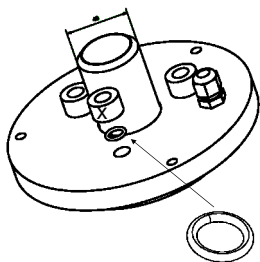


	DK	GB	D
4005 1052	Elektrode E200/30 antimagnetisk nikkell	Electrode E200/30 anti-magnetic nickell	Elektrode E200/30 antimagnetisch Nickell
4005 1053	Elektrode E200/20 antimagnetisk nikkell	Electrode E200/20 anti-magnetic nickell	Elektrode E200/20 antimagnetisch Nickell
4005 1054	Elektrode E200/10 antimagnetisk nikkell	Electrode E200/10 anti-magnetic nickell	Elektrode E200/10 antimagnetisch Nickell
4005 1060	Elektrode E200/5 antimagnetisk nikkell	Electrode E200/5 anti-magnetic nickell	Elektrode E200/5 antimagnetisch Nickell
4005 1055	Elektrode E200/R antimagnetisk nikkell	Electrode E200/R anti-magnetic nickell	Elektrode E200/R antimagnetisch Nickell

FR	KR	R	K	DC	DO	Mini	ML	PG	SF
X	X	X						X	

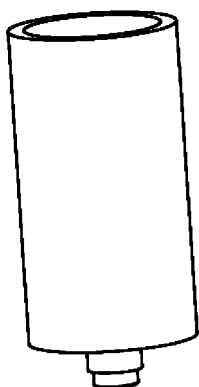
DAMP / STEAM / DAMPF

Beholder / Container / Behälter



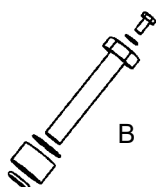
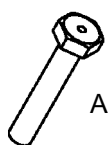
	DK	GB	D
	4005 1005	Låg uden elektroder A40	Top without electrodes A40
	011 190	O-ring EPDM 9,3x2,4	O-packing EPDM 9,3x2,4
X	4005 1021	Bøsning PP t/M10	Busching PP f/M10

FR	KR	R	K	DC	DO	Mini	ML	PG	SF
X	X	X						X	



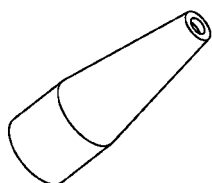
	DK	GB	D
	4005 1074	Beholder for PG100	Container for PG100

FR	KR	R	K	DC	DO	Mini	ML	PG	SF
X	X	X						X	



	DK	GB	D
A	016 104	Bolt f/elektrode 10x55 gevind 4mm	Bolt f/electrode 10x55 thread 4mm
B	4005 1004	Elektrodebolt M10, sæt	Electrode bolt M10, kit

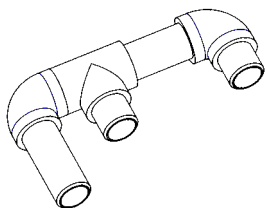
FR	KR	R	K	DC	DO	Mini	ML	PG	SF
X	X	X						X	



	DK	GB	D
	064 431	Gummitylle til elektrode	Rubber nipple for electrode

FR	KR	R	K	DC	DO	Mini	ML	PG	SF
X	X	X						X	

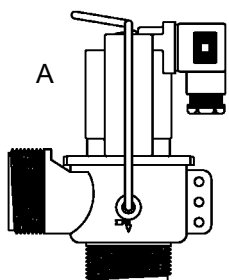
DAMP / STEAM / DAMPF
Beholder / Container / Behälter



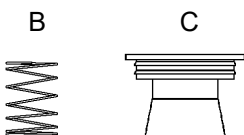
	DK	GB	D
4005 1132	Afløb, 2 beholdere / 1 ventil	Drain, 2 containers / 1 valve	Ablauf, 2 Behälter / 1 Ventil

FR	KR	R	K	DC	DO	Mini	ML	PG	SF
X	X	X			X				

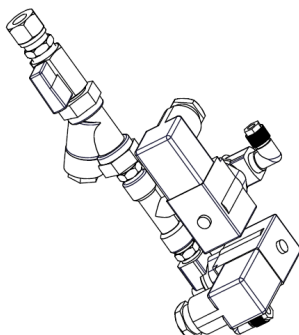
DAMP / STEAM / DAMPF
Ventiler / Valves / Ventile



	DK	GB	D
A 013 092	Tømmeventil aut. 1 1/4"	Drain valve aut. 1 1/4"	Entleerventil aut. 1 1/4"
B 013 088	Fjeder til tømmeventil	Spring for drain valve	Feder Entleerventil
C 013 089	Gummimembran	Rubber diaphragm	Gummimembran



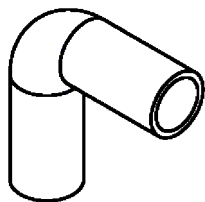
FR	KR	R	K	DC	DO	Mini	ML	PG	SF
X	X	X						X	



	DK	GB	D
4005 1116	Magnetventil m/filter dobbelt	Solenoid valve w/filter double	Magnetventil m/Filter doppelt

FR	KR	R	K	DC	DO	Mi Li	ML	PG	SF

DAMP / STEAM / DAMPF
Tilbehør / Accessories / Zubehör

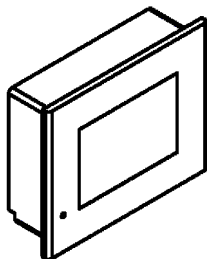


	DK	GB	D
014 305	Dampslange 40 mm, 90°	Steam hose 40 mm, 90°	Dampfschlauch 40 mm, 90°

FR	KR	R	K	DC	DO	Mini	ML	PG	SF
X	X	X						X	

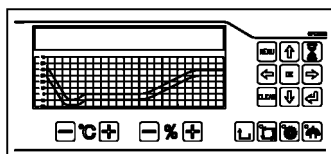
EL / POWER / STROM

Computer / Computer / Computer



Til rum / For room / Für Raum
FR - KR - K - DC

	DK	GB	D
9080 0995	Fra GPC til Touch 4"	From GPC to Touch 4"	Von GPC zu Touch 4"
9080 0996	Fra GPC til Touch 6"	From GPC to Touch 6"	Von GPC zu Touch 6"
9082 0995	Fra DLPC til Touch 4" 1-2 Fordampere	From DLPC to Touch 4" 1-2 Evaporators	Von DLPC zu Touch 4" 1-2 Verdampfer
9082 0996	Fra DLPC til Touch 6" 1-2 Fordampere	From DLPC to Touch 6" 1-2 Evaporators	Von DLPC zu Touch 6" 1-2 Verdampfer
9082 0997	Fra DLPC til Touch 4" 3-5 Fordampere	From DLPC to Touch 4" 3-5 Evaporators	Von DLPC zu Touch 4" 3-5 Verdampfer
9082 0998	Fra DLPC til Touch 6" 3-5 Fordampere	From DLPC to Touch 6" 3-5 Evaporators	Von DLPC zu Touch 6" 3-5 Verdampfer
9080 0985	Fra FR40/KR8/R4 til Touch 4" 1-2 Fordampere	From FR40/KR8/R4 to Touch 4" 1-2 Evaporators	Von FR40/KR8/R4 zu Touch 4" 1-2 Verdampfer
9080 0986	Fra FR40/KR8/R4 til Touch 6" 1-2 Fordampere	From FR40/KR8/R4 to Touch 6" 1-2 Evaporators	Von FR40/KR8/R4 zu Touch 6" 1-2 Verdampfer

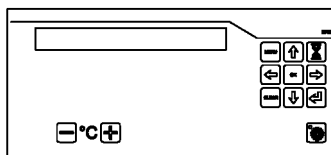


	DK	GB	D
9019 0000	Computer GPC 2000 DA, EN og DE	Computer GPC 2000 DA, EN and DE	Computer GPC 2000 DA, EN und DE
9019 0001	Computer GPC 2000 FR, NL og DE	Computer GPC 2000 FR, NL and DE	Computer GPC 2000 FR, NL und DE
060 754	Display 2x40 karakterer	Display 2x40 characters	Display 2x40 Charaktere
065 099	Batteri, 3,6V Lithium	Battery, 3,6V Lithium	Batterie, 3,6V Lithium
	Overlæg per forespørgsel	Overlay per request	Blende per Anfrage

Andre sprog / Other languages / Andere Sprachen: Oplys sprog / Specify language / Sprache angeben

FR	KR	R	K	DC	DO	Mini	ML	PG	SF
X	X								

Før / Before / Bevor 2011



	DK	GB	D
9039 0000	Computer DLPC 2000 DA, EN og DE, EI afrimning	Computer DLPC 2000 DA, EN and DE, el defrost	Computer DLPC 2000 DA, EN und DE, EI Abtau
9039 0040	Computer DLPC 2000 DA, EN og DE, Hotgas	Computer DLPC 2000 DA, EN and DE, Hotgas	Computer DLPC 2000 DA, EN und DE, Hotgas
9039 0004	Computer DLPC 2000 FR, NL og DE, EI afrimning	Computer DLPC 2000 FR, NL and DE, el defrost	Computer DLPC 2000 FR, NL und DE, EI Abtau
9039 0044	Computer DLPC 2000 FR, NL og DE, Hotgas	Computer DLPC 2000 FR, NL and DE, Hotgas	Computer DLPC 2000 FR, NL und DE, Hotgas
060 754	Display 2x40 karakterer	Display 2x40 characters	Display 2x40 Charaktere
065 099	Batteri, 3,6V Lithium	Battery, 3,6V Lithium	Batterie, 3,6V Lithium
	Overlæg per forespørgsel	Overlay per request	Blende per Anfrage

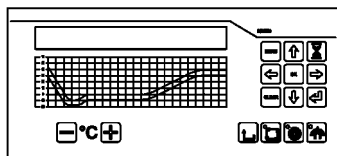
Andre sprog / Other languages / Andere Sprachen: Oplys sprog / Specify language / Sprache angeben

FR	KR	R	K	DC	DO	Mini	ML	PG	SF
			X	X					

Før / Before / Bevor 2011

EL / POWER / STROM

Computer / Computer / Computer

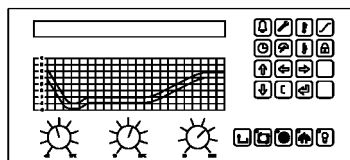


	DK	GB	D
9030 0003	Computer DOPC 2000	Computer DOPC 2000	Computer DOPC 2000
060 754	Display 2x40 karakterer	Display 2x40 characters	Display 2x40 Charaktere
065 099	Batteri, 3,6V Lithium	Battery, 3,6V Lithium	Batterie, 3,6V Lithium
	Overlæg per forespørgsel	Overlay per request	Blende per Anfrage

Oplys sprog / Specify language / Sprache angeben

FR	KR	R	K	DC	DO	Mini	ML	PG	SF
					X				

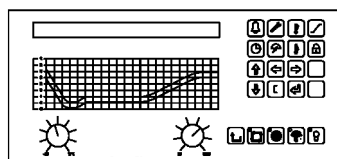
Før / Before / Bevor 2011



	DK	GB	D
1303 1004	Computer for fryserasker	Computer for freezer prover	Computer für Gärunterbrecher
006 753	Display 1x40 karakterer	Display 1x40 characters	Display 1x40 Charaktere
060 764	Batteri, 2,4V	Battery, 2,4V	Batterie, 2,4V
	Overlæg per forespørgsel	Overlay per request	Blende per Anfrage

FR	KR	R	K	DC	DO	Mini	ML	PG	SF
X									

Før / Before / Bevor 2007



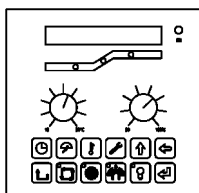
	DK	GB	D
1603 1000	Computer for dejcontroller	Computer for dough controller	Computer für Teigcontroller
006 753	Display 1x40 karakterer	Display 1x40 characters	Display 1x40 Charaktere
060 764	Batteri, 2,4V	Battery, 2,4V	Batterie, 2,4V
	Overlæg per forespørgsel	Overlay per request	Blende per Anfrage

FR	KR	R	K	DC	DO	Mini	ML	PG	SF
				X					

Før / Before / Bevor 2007

EL / POWER / STROM

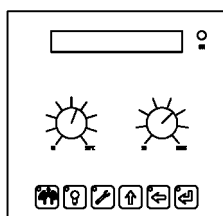
Computer / Computer / Computer



	DK	GB	D
1203 1005	Computer for kølerasker	Computer for retarder prover	Computer für Gärverzögerer
060 764	Batteri, 2,4V	Battery, 2,4V	Batterie, 2,4V

FR	KR	R	K	DC	DO	Mini	ML	PG	SF
	X								

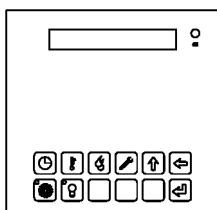
Før / Before / Bevor 2007



	DK	GB	D
1103 1004	Computer for raskerum	Computer for prover	Computer für Gärraum
060 764	Batteri, 2,4V	Battery, 2,4V	Batterie, 2,4V

FR	KR	R	K	DC	DO	Mini	ML	PG	SF
		X							

Før / Before / Bevor 2007

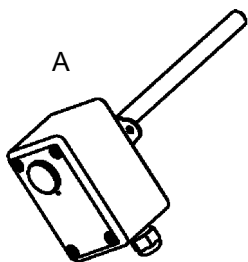


	DK	GB	D
1403 1001	Computer for kølerum	Computer for Cooler	Computer für Kühlzelle
1503 1001	Computer for frostrum	Computer for freezer	Computer für Froster
060 764	Batteri, 2,4V	Battery, 2,4V	Batterie, 2,4V

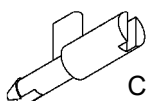
FR	KR	R	K	DC	DO	Mini	ML	PG	SF
			X						

Før / Before / Bevor 2007

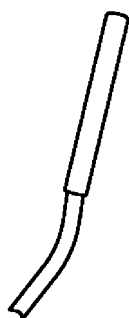
EL / POWER / STROM
Følere / Sensors / Sensoren



		DK	GB	D
A	060 776	Hygrostat HG80, manuel, speciel for brødsyre.	Hygrostat HG80, manual, special for dough acid.	Hygrostat HG80, manuell, besonderes für Brot Säure.
B	060 880	Hygrostatknap	Button for Hygrostat	Hygrostatknopf
C	060 881	Aksel til knap Hygrostat	Shaft for button Hygrostat	Shaft für Knopf Hygrostat



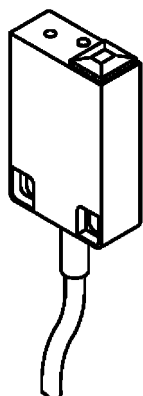
FR	KR	R	K	DC	DO	Mini	ML	PG	SF
								X	



	DK	GB	D
1303 1011	Føler, AD 592	Sensor, AD 592	Fühler, AD 592

FR	KR	R	K	DC	DO	Mini	ML	PG	SF
X	X	X	X	X	X	X	X		X

Før / Before / Bevor 2010

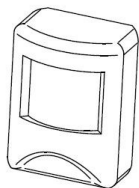


	DK	GB	D
061 346	Niveauføler, kapacitiv 80°C GPC2000	Level sensor, capacitive 80°C GPC2000	Niveau-Sensor, kapazitiv 80°C GPC2000

FR	KR	R	K	DC	DO	Mini	ML	PG	SF
X	X				X	X			

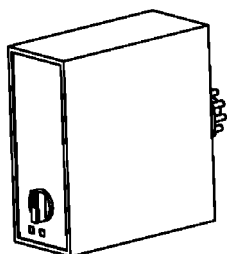
Før / Before / Bevor 2010

EL / POWER / STROM
Relæer / Relays / Relais



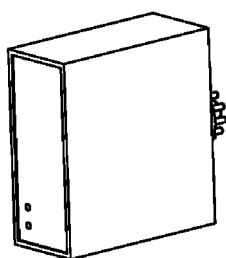
	DK	GB	D
060 198	Bevægelsesføler PIR for 2000 computere	Motion sensor for 2000 computers	Bewegungssensor PIR für 2000 Computern

FR	KR	R	K	DC	DO	Mini	ML	PG	SF
			X	X					



	DK	GB	D
061 324	Relæ SM 115 024	Relay SM 115 024	Relais SM 115 024

FR	KR	R	K	DC	DO	Mini	ML	PG	SF
								X	

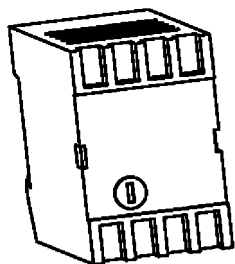


	DK	GB	D
061 335	Fasebrudsrelæ RP	Phase break relay RP	Phasentrennungsrelais RP

FR	KR	R	K	DC	DO	Mini	ML	PG	SF
X	X								

EL / POWER / STROM

Relæer / Relays / Relais



	DK	GB	D
061 575	Relæ f/hastighedsregulator ES168	Relay f/fan speed controller ES168	Relais f/Geschwindigkeitsregler ES168
0210 9999	Reparation af relæ	Repair of relay	Reparatur des Relais

Udgået -	Kan ikke købes, kun repareres.
Discontinued -	Can not be bought any more, only repaired.
Eingestellt -	Kan nicht mehr gekauft werden, nur repariert.

FR	KR	R	K	DC	DO	Mini	ML	PG	SF
X	X			X	X				

Før / Before / Bevor 1997

Lillnord A/S
Knudsminde 2
DK-8300 Odder

Phone: +45 8780 3130
Fax: +45 8780 3131
E-mail: mail@lillnord.dk